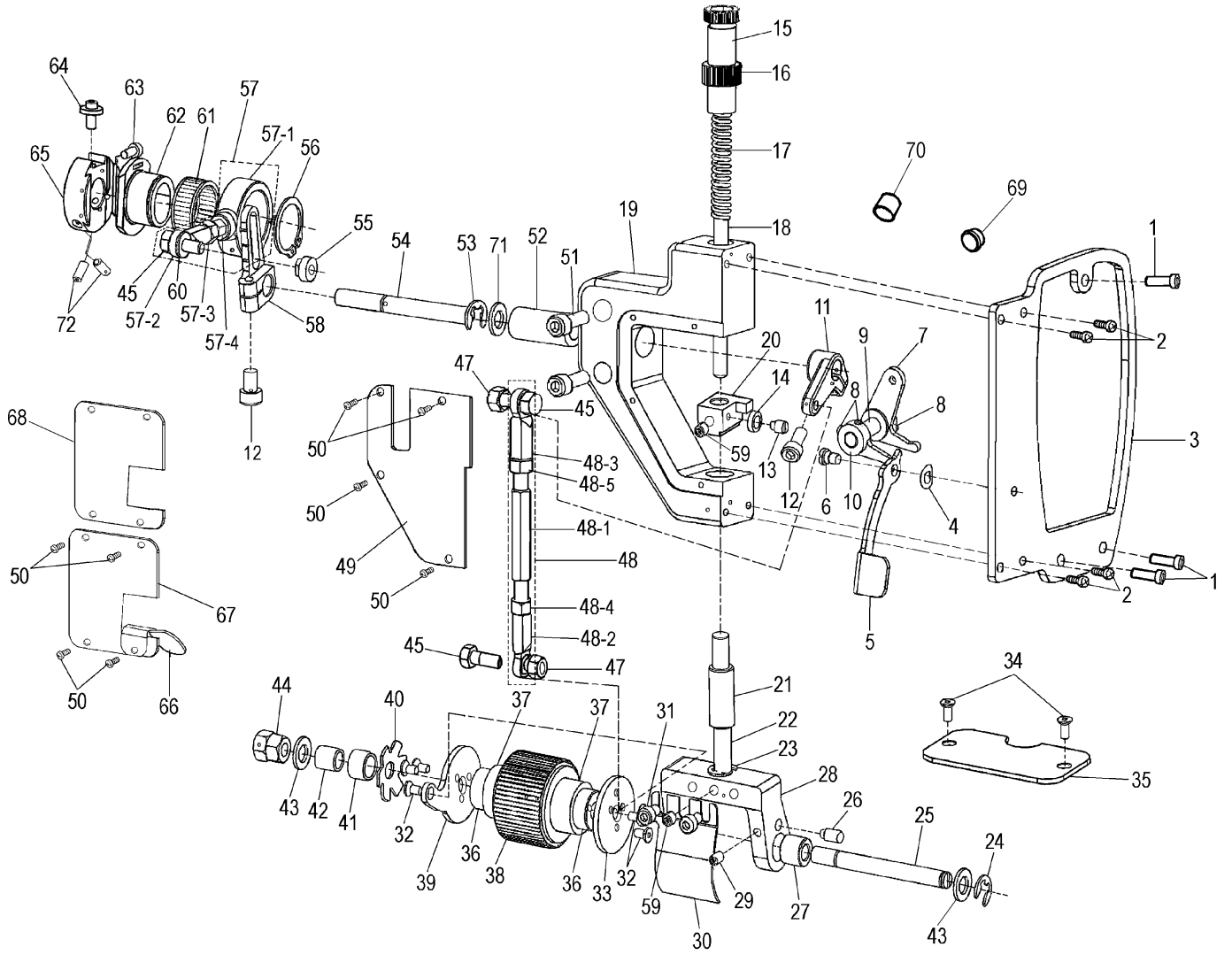


0056D/P



0056D/P

| No. | Ref.No. | Description | Qt | Remark |
|-----|--------------|--|----|--------|
| 1 | 158220009 | Screw SM4.37-40 × 19 | 3 | |
| 2 | B040609094 | Screw M4 × 10 | 4 | |
| 3 | 158K00002 | Front cover | 1 | |
| 4 | S150603003 | Washer GB860-87 φ 6 | 1 | |
| 5 | 158K00016 | Presser foot lifter | 1 | |
| 6 | 158K00017 | Screw M5 | 1 | |
| 7 | 158K00012 | Knee lifter lever | 1 | |
| 8 | S150299027 | Screw GB77-2000 M4 × 4 | 4 | |
| 9 | 158K00011 | Connecting shaft | 1 | |
| 10 | 158K00010 | Knee lifting lever of back puller | 1 | |
| 11 | 158K00006 | Left crank | 1 | |
| 12 | S150299004 | Screw GB70-85 M5 × 12 | 2 | |
| 13 | 158K00018 | Screw M4 | 1 | |
| 14 | 158K00019 | Slide block | 1 | |
| 15 | 022750001--W | Presser regulating thumb screw (RAL7035) | 1 | |
| 16 | 022750002--W | Presser regulating thumb nut (RAL7035) | 1 | |
| 17 | 158K00020 | Presser spring | 1 | |
| 18 | 022700012 | Presser bar guide | 1 | |
| 19 | 158K00001 | Bracket of the back puller | 1 | |
| 20 | 158K00013 | Presser bar lifting bracket | 1 | |
| 21 | 158K00021 | Bushing | 1 | |
| 22 | 158K03006 | Presser bar | 1 | |
| 23 | S150617005 | Thrust collar GB894.1-86 φ 8 | 1 | |
| 24 | B062040764 | Collar E6 | 1 | |
| 25 | 158K03002 | The shaft of the puller | 1 | |
| 26 | 208R00021 | Screw | 1 | |
| 27 | 197720007 | Shaft sleeve | 1 | |
| 28 | 158K03001 | Bracket of the puller | 1 | |
| 29 | S150212006 | Screw GB77-2000 M5 × 6 | 1 | |
| 30 | 158K00009 | Guard plate | 1 | |
| 31 | 116240003 | Screw M5x5 | 2 | |
| 32 | 197720016 | Screw SM1/8''(3.18)x44 | 6 | |
| 33 | 208R00023 | Stopping plate | 1 | |
| 34 | 022100020 | Screw of throat plate | 2 | |
| 35 | 158K00014 | Plate of back puller | 1 | |
| 36 | 158K03005 | Bearing bush | 2 | |
| 37 | S150801090 | Bearing HF2016 | 2 | |
| 38 | 158K03003 | Back puller | 1 | |
| | 158K03007 | Back puller | 1 | |
| 39 | 158K03004 | Linked plank | 1 | |
| 40 | 197720010 | Spring plate | 1 | |

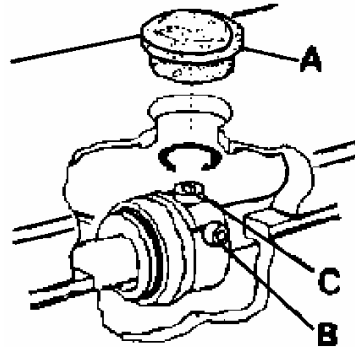
| No. | Ref.No. | Description | Qt | Remark |
|------|--------------|-------------------------------------|----|--------|
| 41 | 197720008 | Shaft sleeve | 1 | |
| 42 | 197720009 | Shaft sleeve | 1 | |
| 43 | 110E10003 | Washer | 2 | |
| 44 | S150504007 | Nut GB6170-86 M8 | 2 | |
| 45 | BXF8441009 | Screw M6 | 3 | |
| 47 | S150503005 | Hex nut M6 | 3 | |
| 48 | 158K04000 | Long connecting rod assy | 1 | |
| 48-1 | 158K04001 | Connecting rod-long | 1 | |
| 48-2 | BXF8447009 | Ball joint lever assy (R) | 1 | |
| 48-3 | BXF8445009 | Ball joint lever assy (L) | 1 | |
| 48-4 | B089040704 | Hex nut M6 | 1 | |
| 48-5 | BXF8442009 | Left-handed nutM6 | 1 | |
| 49 | 158K00008 | Cover plate | 1 | |
| 50 | S150210009 | Screw GB70.2-2000 M3 × 6 | 8 | |
| 51 | S150209056 | Screw GB70-85 M6 × 16 | 2 | |
| 52 | 158K00004 | Dragging set | 1 | |
| 53 | S150617017 | Thrust collar GB894.1-86-10 | 1 | |
| 54 | 158K00005 | Dragging shaft | 1 | |
| 55 | 158K00023 | Screw M6 | 1 | |
| 56 | S150617007 | Thrust collar GB894-76 φ 25 | 1 | |
| 57 | 158K02100 | Cam-link assy | 1 | |
| 57-1 | 158K02002 | Cam-link | 1 | |
| 57-2 | BXF8447009 | Ball joint lever assy (R) | 1 | |
| 57-3 | B089040704 | Nut M6 | 1 | |
| 57-4 | 158K02003 | Connecting rod-short | 1 | |
| 58 | 158K00003 | Right crank | 1 | |
| 59 | S150299029 | Screw GB77-85 M6 × 6 | 2 | |
| 60 | BX07415009 | Washer 6 | 1 | |
| 61 | S150801040 | Needle bearing GB/T307-2005 K252913 | 1 | |
| 62 | 182F40043 | Roller wedge cam | 1 | |
| 63 | S150209033 | Screw M4X10 | 1 | |
| 64 | 182F40044 | Adjusting screw | 1 | |
| 65 | 158K02001 | Cam holder | 1 | |
| 66 | 158K00015 | Guide plate | 1 | |
| 67 | 158K00007 | Plate | 1 | |
| 68 | 158K00024 | Sealing gasket | 1 | |
| 69 | 022200011--V | Rubber cap 8.8 | 1 | |
| 70 | 036500003 | Rubber cap 20 | 1 | |
| 71 | 197400022 | Washer | 1 | |
| 72 | S150299012 | Screw M4x6 | 2 | |

Adjusting Feed Amount

Scheme 1:

The adjustment procedure of feed amount is as Follows:

1. Remove seal plug (A) ON top cover.
2. Turn handwheel till screw(B) of feed roller eccentric appears, then loosen screw(B).
3. Turn handwheel till adjusting screw (C) appears at the hole of seal plug.
4. To increase the feed amount,turn adjusting screw(C) counterclockwise and to decrease turn it clockwise.
5. Tighten screw (B) of feed roller eccentric.
Use a hexagonal screwdriver in the accessory box.
(Tightening torque:25kgf.cm.)



If the cloth feed is not enough, please try the following step(scheme 2)

Scheme 2:

Adjust the cloth feed of the puller mechanism slightly

1. Loosen screw D
2. Moving the screw D and the crank E to adjust the cloth feed, the position going up to increase the cloth feed, the position going down to decrease the cloth feed.
If it cannot achieved to adjust the cloth feed by the
3. Scheme 1, scheme 2 is available.

